

Quick Guide

MALÅ Easy Locator Core

Assembly and Start-up

The Easy Locator Core is delivered assembled and folded. Release the locking strap holding the handle and antenna together. Unfold the handle until the hinge mechanism snaps in place.

Lift the rear handle piece in place and use the silver-coloured knob to attach the foldable handle to the rear handle piece.

Attach a tablet for data acquisition (and if needed an external GNSS or Total Station prism).



Note! The rear left wheel contains an internal encoder for precise distance measurements.

Make sure the batteries are charged. Open the battery compartment and insert the batteries.

Press the ON/OFF button to start the Easy Locator Core. The ON/OFF button will blink during start up. When the light is steady, the system is ready to be connected to the MALÅ Controller App.



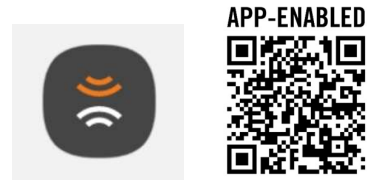
Note! When powering OFF; press and hold the ON/OFF button.

The batteries are found under the black lid. You can hot-swap the batteries, one battery at a time, during a measurement. This will keep you going without the need to shut off the equipment when changing the batteries during a survey.

Start measurements

- 1) Make sure that MALÅ Controller App is installed on your mobile device.

If using an external GNSS or Total Station device, make sure it is connected by Bluetooth to your mobile device used for data acquisition.



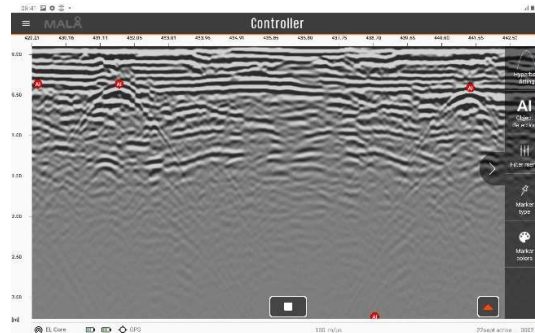
MALÅ Controller App can be downloaded from <https://www.guidelinegeo.com/product/mala-controller-app/> or by using the QR code.

- 2) Set up a mobile hotspot for communication between your mobile device and the Easy Locator Core.
- 3) Change the network name (SSID) to **MALÅxxxxxxx**, where xxxxxxxx will be replaced with the antenna serial number.
- 4) Change the password for the mobile hotspot to **mala0123**.



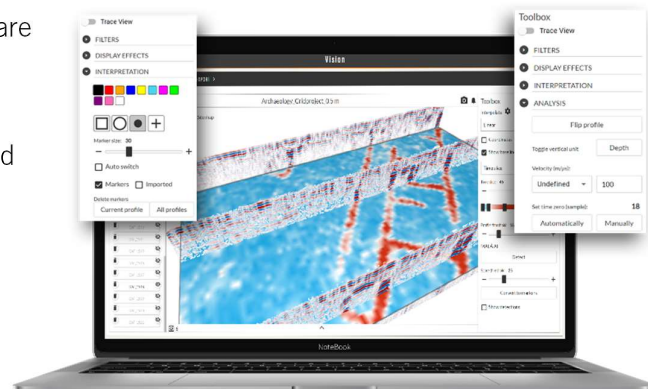
Label with information on serial number and QR code.

- 5) Open MALÅ Controller App and start measuring. You can either create a new project or continue an existing project. Measurements can be carried out both as 2D or 3D projects. Use the floating menus on the right-hand side for hyperbola fitting, AI, filters and markers.



Note! Use the MALÅ AI for easy real-time identification of hyperbolas.

- 6) Before starting your survey, make sure you have entered suitable measurement settings. Also make sure that the GNSS device settings are correct (if you are using such a device).
- 7) When the survey is complete, upload your data to MALÅ Vision (for safe and fast back-up as well as data processing, interpretation, and reporting).



Wireless connection

To communicate between the GPR antenna and MALÅ Controller App, Wi-Fi (mobile hotspot) is used. When communication is working, the antenna model is displayed to the left in the status bar in MALÅ Controller App together with battery and GNSS status.

Successful connection:



No connection:



It is important to have a stable Wi-Fi connection between the mobile device and GPR antenna for effortless data collection. The MALÅ Controller App has advanced features to minimize the impact of difficult Wi-Fi conditions while you measure such as automatic sync to recover data from interruptions.

Unstable Wi-Fi connections are typically caused by wireless interference. This can occur in apartment complexes or other dense areas, where several Wi-Fi networks are active nearby.

Troubleshooting connectivity issues

We recommend the following when troubleshooting connectivity:

1. If you can't connect to the antenna at all make sure you follow the workflow described in the section *Start measurement* in the beginning of this Quick Guide or check the *MALÅ Controller App Quick Guide* or *User Manual*. **Make sure everything is configured exactly as described.**
2. Ideally set up your system in an **area with minimal Wi-Fi interference** to reduce potential problems.
3. **Make sure that there is no other hotspot** with the same network name (SSID) running on another mobile device. Do this by disable the hotspot and search for Wi-Fi networks. Make sure there is no other Wi-Fi network with the same SSID as you have set up.
4. **Disable Wi-Fi** on your mobile device and then **turn off and turn on the hotspot.**
5. Make sure you're using the **correct SSID** for the hotspot (MALAxxxxxxx). The xxxxxxxx indicate the serial number of your GPR antenna. Also check the password, which should be **mala0123**
6. Make sure that the antenna **batteries are charged**. For Easy Locator Core, the indicator on the batteries should have at least two bars. The LED may be on even though there is not enough battery power to initiate connection to MALÅ Controller App.
7. If that doesn't work, **restart the MALÅ Controller App** on your mobile device and wait for at least 30 seconds. This is done by "Close all" or swipe off the app in the Recent view (button with three lines or a square).
8. **Easy Locator Core specific:** If you still cannot get connection, or if you for some reason would lose connection to the antenna, press the **ON/OFF** button on the antenna **5 times** within 5 seconds. This will reinitialize the antenna and reset the connection. Please note that this may take up to 2 minutes.
9. If that doesn't work press and **hold the ON/OFF** button to turn the antenna off completely, then power it on again.
10. If the above doesn't work contact us at support@guidelinegeo.com